

Love
& COCKTAILS



Winter OLD FASHIONED

WINTER OLD FASHIONED

Chilly out? Warm up with Woodford Reserve Bourbon, brown sugar, cane sugar, a dash of orangecello and chocolate bitters served warm with a hint of cloves. *190 cal*

VELVET VIBES

Skyy Infusions Wild Strawberry Vodka, red velvet syrup and sweet cream served on the rocks and topped with whipped cream and red velvet cookie crumble. *410 cal*



FIRESTONE 805 ORIGINAL

A refreshing blonde ale that is the perfect pairing for ... just about everything!

4.7% abv

200 cal (pint glass)

280 cal (22oz mug)

THE DREAMING TREE ROSÉ

A bright and vibrant wine rich in notes of fresh strawberry and nectarines.

150 cal (6oz)

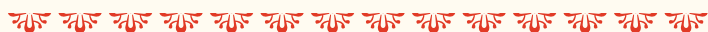
220 cal (9oz)

DECOY CABERNET SAUVIGNON

Lush dark fruit, oak spice and perfect tannins make this wine the perfect pairing for lip-smacking BBQ.

150 cal (6oz)

220 cal (9oz)






Love & BAR-B-QUE

➔ WHEN TWO GREAT LOVES MAKE THE PERFECT PAIR ➔



PORK BELLY BURNT ENDS APPETIZER
 Slow-smoked, tender pork belly atop country white bread, with bread-and-butter pickles.
 1170 cal

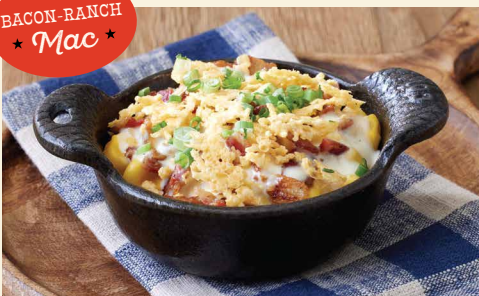
★ SLOW-SMOKED *Bar•B•Que* ★

Served with your choice of 2 swoon-worthy sides and housemade biscuits & apple butter 410 cal each
 Add a House Salad 100 cal or Caesar Salad 290 cal

SWOON-WORTHY
 SIDES

- New!* Picnic Potato Salad 580 cal
- Garlic Mashed Potatoes 240 cal
- Macaroni & Cheese 290 cal
- Sautéed Seasonal Vegetables 80 cal
- Fresh-Cut Fries 120 cal
- Southern Braised Greens 90 cal
- Creamy Coleslaw 200 cal
- BBQ Beans 200 cal
- Watermelon Slices 30 cal

BACON-RANCH
 ★ Mac ★



**UPGRADE TO A PREMIUM SIDE FOR 1.99
 OR ADD A PREMIUM SIDE FOR 4.99.**

New! **BACON-RANCH MAC**
 Rich and delicious macaroni & cheese with applewood bacon and creamy ranch. Topped with crispy parmesan. 370 cal

New! **COUNTY FAIR CORN PUDDING**
 Sweet and savory corn pudding topped with Lucille's own apple butter and scallions. 440 cal

See complete list of premium sides on page 8.



THE *Perfect* PAIR

HALF RACK OF RIBS & SOUTHERN FRIED CHICKEN
 Your choice of a half rack of meaty Baby Back Ribs or juicy St. Louis Ribs with perfectly seasoned Southern Fried Chicken topped with Grandpa's pan gravy. 1640 cal



Pick YOUR PAIR

TWO-ITEM BUILD-YOUR-OWN BBQ COMBO
 320-1650 cal

See list of meat choices on page 9.

